

NOTTS Outdoors Education Service

Primary Schools and Academies Day Visits



Bestwood



The Mill



Perlethorpe



Sherwood



Welcome to Notts Outdoors

Notts Outdoors is the outdoor and environmental education service for Nottinghamshire County Council.

Our ethos is all about discovering the great outdoors, having fun, and making memories to last a lifetime!

When you visit one of our centres, you can expect a fun-packed educational experience that will enrich and enhance curriculum learning as well as helping young people to build confidence and develop their social skills.

We work closely with schools and education colleagues to develop our services and make sure they're right for you.

Our friendly and experienced professional instructors are highly qualified and committed to delivering exceptional outdoor learning experiences.



“ The pupils gain fantastic benefits from our visits to any one of the Notts Outdoors centres, and we can draw upon their experiences in school to enhance their learning. ”

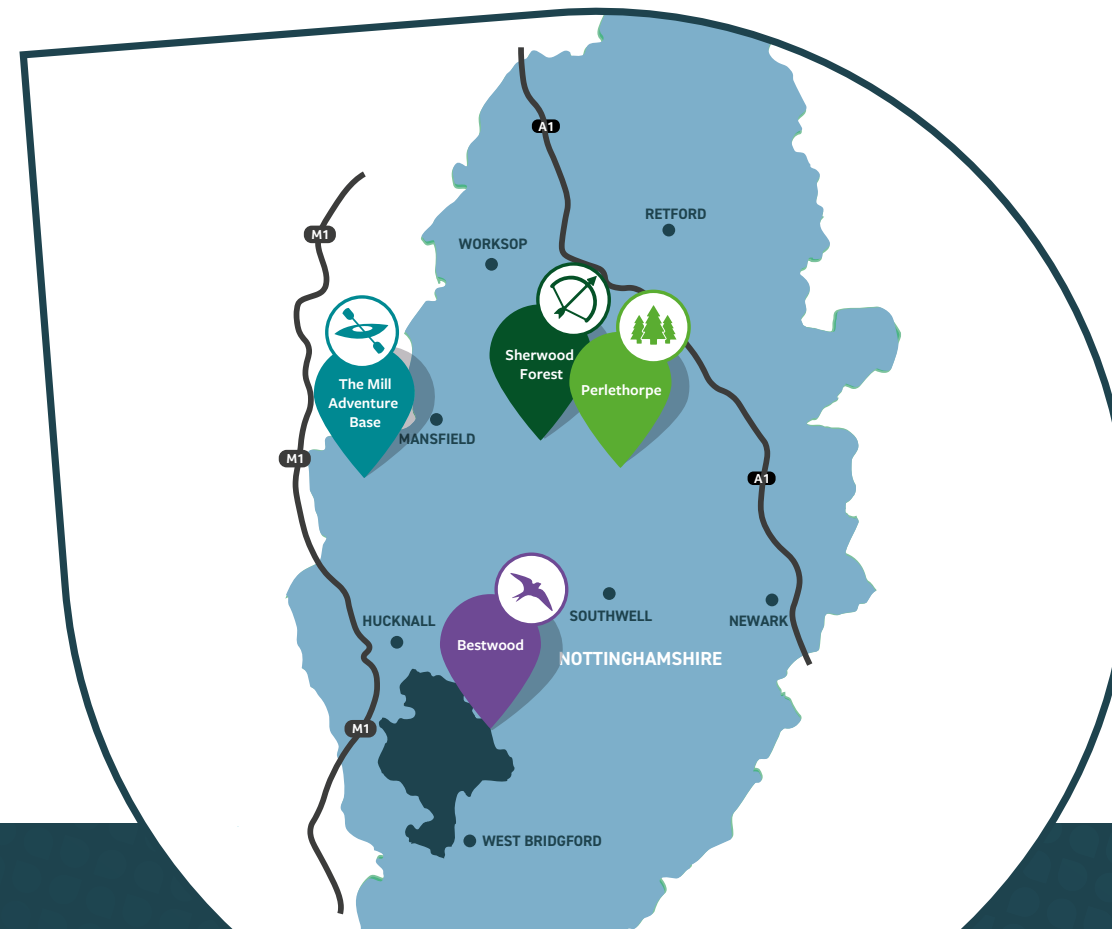
Teacher, Rushcliffe School


Educational Day Visits

Our day visits are designed to support you in delivering fun and memorable curriculum learning. We offer a range of educational experiences from history to nature to science and beyond.

We deliver day visits from the following venues:

- ▶ The Mill Adventure Base
- ▶ Perlethorpe Environmental Education Centre
- ▶ Sherwood Forest Environmental Education Centre
- ▶ Bestwood Environmental Education Centre





We have over 50 activities on offer across our centres, each designed to challenge students to bring the best out of them in a fun and memorable way.

Our activities are available for half or full days and can be combined to maximise your visit. We offer curriculum based activities designed to take the learning outdoors and optimise student learning using the national curriculum alongside our adventurous multi-activity days.

Scan to find out
more about our
activities



Take a journey through time

Through our immersive experiences, children will be transported back to a time where life was very different. Your pupils will be given the clothes from that era, engage in activities that children would have participated in, hear stories, and learn historical facts.

Stone Age

Available at Bestwood

- Shelter building
- Cave painting
- Medallion making
- Build Stonehenge
- Make a clay pot
- Willow weaving
- Investigating artefacts



Evacuees

Available at Perlethorpe

- Billeting to local families
- Secret Suitcase activity
- Visit an Anderson shelter
- Friend or Foe activity

Viking Life

Available at Perlethorpe

- › Visit a Viking settlement
- › Milling flour
- › Jewellery making
- › Shield wall training
- › Viking artefacts investigation



Really good. Great delivery of the session and loved the Sherwood Forest Centre. We really enjoyed our school trip! The instructor did a great job engaging our KS1 children. Would love to come again

Teacher, St Mary & St Martin Primary

Robin Hood & Medieval Life

Available at Sherwood

- › Lady Marian or Robin Hood will be your guide
- › Visit to the Major Oak
- › Medieval artefact handling
- › Medieval weaponry costume display
- › Soft archery (Please ask for details to add this option)



Victorians

Available at Perlethorpe

- › Attend a Victorian school
- › Use slate boards and ink pens
- › Enjoy Victorian games
- › Victorian values



Saxons

Available at Perlethorpe

- › Visit a Saxon settlement
- › Timelines of Anglo Saxon Britain
- › Archaeological dig
- › Rune Adventure using Danelaw maps

Romans

Available at Bestwood

- › Dress as a Roman soldier
- › Learn about Roman armour
- › Practice javelin throwing
- › Build a working catapult
- › Investigate Roman artefacts

The Viking activity day was fantastic! The kids loved making the wheat flour, it was the best! Grind, pat, rub! You gave me and our group clear instructions throughout

To find out more about a visit that would support your history topic, please contact us via email perlethorpe@nottscg.gov.uk or call **0115 9775 775**



Step into Science

We can help your pupils to discover more about science through our practical and interactive day visits. Sessions are flexible so they can be adapted to meet learning requirements.

Science Day

Available at Bestwood

- Experiments to discuss the effect of gravity and forces
- Assemble and fire the rocket
- Predict and record outcomes
- Analyse results

“ A super day, our class were able to apply their maths and science knowledge during the rocket launching. Would recommend.

Teacher, Walesby
CofE School



Our Planet Our Problem

Available at Bestwood and Perlethorpe

- Discover what happens to our rubbish
- Create biodegradable plant plots to grow beans
- Discover how long it takes for items to degrade by participating in a landfill activity



River Dipping

Available at Perlethorpe

- Learn about the different zones in the river
- Dip for mini beasts the river
- Identify findings using a key
- Do the river dance!

“ The tutor was very knowledgeable and built up a lovely rapport with the children. Clear safety instructions were given prior to every activity. The range of activities was excellent.

Teacher, Hemswell
Primary School

To find out more about a visit that would support your science topic please contact us via email

perlethorpe@nottscc.gov.uk

or call **0115 9775 775**

Explore the World Around You

Art in the environment

Available at Perlethorpe, Sherwood and Bestwood

- Nature walk
- Leaf and bark rubbing
- Scavenger hunt
- Ground art
- Artwork using natural materials

Traditional Tales Immersive storytelling

Available at Bestwood and Perlethorpe

- Costumed role play
- Create natural artwork
- Links to sensory activities programme

Stories include:

Three Little Pigs
Little Red Riding Hood
Three Billy Goats Gruff



“ We had a great day and the staff were fantastic. Thank you very much for making my Year 1’s first trip an exciting and stress free one!

Teacher, Trowell Primary School ”

Animal Homes Investigate habitats

Available at Perlethorpe, Sherwood and Bestwood

- Nature walk
- Blindfolded team work activity
- Construct habitats
- Investigate how animals survive in their habitats



Sensory Activities Learn about all five senses

Available at Perlethorpe, Bestwood and Sherwood

- Woodland potions
- Leaf rubbing
- Find your tree activity
- Badgers breakfast activity

“ A number of children from the class described it as ‘the best trip I’ve ever been on’. It was a thoroughly enjoyable day with fabulous activities and the person leading the day was fantastic with the children.

Teacher, Pilsley Primary School ”

To find out about other activities please contact us via email perlethorpe@nottsc.gov.uk or call **0115 9775 775**

Adventurous Activities

The Mill Adventure Base provides the opportunity for pupils to experience a range of adventurous activities, indoor and outdoor, on land and on water. Packages can be built to suit the needs of your group from two-hour sessions, half days, full days or a seasonal block of adventures. Explore the full range of activities available via our website.

See the list below to get a taste of just some of the fantastic activities available on site:

Climbing Tower

Test your skills by scaling our 12-metre climbing tower! From easy beginner climbs to harder overhangs, this activity has something to challenge everybody.

Zip Wire

Starting from the top of our 12-metre climbing tower, soar through the sky on our twin 100 metre zip wires. You'll discover great views of the reservoir and beyond!

Leap of Faith

This will challenge even the bravest amongst you! Climb up and stand on top of the pole before leaping to catch the trapeze, all whilst being 10 metres up in the air.

Abseiling

How quick can you descend? Abseil from our activity tower and find out! Choose an 8 metre, 10 metre or free hanging abseil for this great individual activity that teaches confidence and resilience.

Canoeing and Katanuig

Learn a new skill by working with your team to navigate your boat across Kings Mill Reservoir.

Did you know?

The Mill Adventure Base is a fully accessible site. The centre also benefits from large meeting rooms, four classrooms, car parking and an on-site cafe, making it the perfect choice for an adventurous experience!



Scan to find out
more about The Mill
Adventure Base



Notts Outdoors in your school

We recognise that it is not always practical to visit one of our centres. So, our bespoke in-house package means that we can bring the learning adventures to you! Qualified and experienced instructors or teachers will bring all of the resources required to deliver activities on your school grounds.

Historical Days

- ▶ Robin Hood & Medieval Life
- ▶ The Vikings

Adventurous Activities

- ▶ Mobile climbing wall
- ▶ Team games
- ▶ Archery
- ▶ Mountain bikes and ramps



Let us bring the adventure to you!

Please contact us via email

nottsoldoors@nottscg.gov.uk

or call **0115 9775 775**



Specialist First Aid Training

We have been delivering first aid training courses for over 15 years. Our qualified trainers will work with you to ensure you receive an accredited award suitable to your requirements.

Why use us for your first aid training needs?

- ▶ Nationally recognised awarding body (ITC First)
- ▶ Competitively priced courses
- ▶ Train at your place of work or come along to one of our centres
- ▶ Courses are delivered by highly experienced and friendly trainers
- ▶ Advice on first aid risk assessment requirements
- ▶ Courses are bookable online



Scan to find
out more

Courses available include:

- ▶ Level 3 Award and Emergency First Aid for Schools and Colleges
- ▶ Level 3 Award First Aid for Schools and Colleges
- ▶ Emergency First Aid at Work
- ▶ Paediatric First Aid
- ▶ Outdoor First Aid
- ▶ Forest Schools First Aid

To find out more about our first aid provision please contact us via email

firstaidtraining@nottscg.gov.uk or call **01433 650 309**



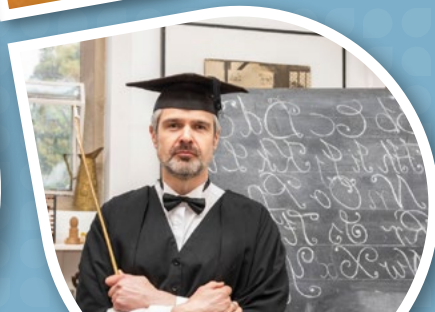
For more details about day visits and other outdoor education options please contact us:

Email: nottsooutdoors@nottscc.gov.uk

Telephone: 0115 9775 775

Website: www.nottsooutdoors.nottinghamshire.gov.uk

Find us on:    @NottsOutdoors



**Nottinghamshire
County Council**

W nottinghamshire.gov.uk

 facebook.com/nottinghamshire

 [@NottsCC](https://twitter.com/NottsCC)