



# National Education Nature Park

Polly Baker & Becky Lawrence

# Session outline



Our vision is a nature park where wildlife thrives. Our nature park will be full of incredible wildflowers, insects, birds and other wonderful wildlife. Our goal is to not replace the nature we already have but add lots of beneficial things to it. The main reason why we want to do this is so we can create a nature paradise for many years to come.



## What is the National Education Nature Park?

### Getting to know your space

- Sound Mapping
- Vision Statement
- Colour Collecting



### Identifying Opportunities

- Points of View
- Habitat Heroes

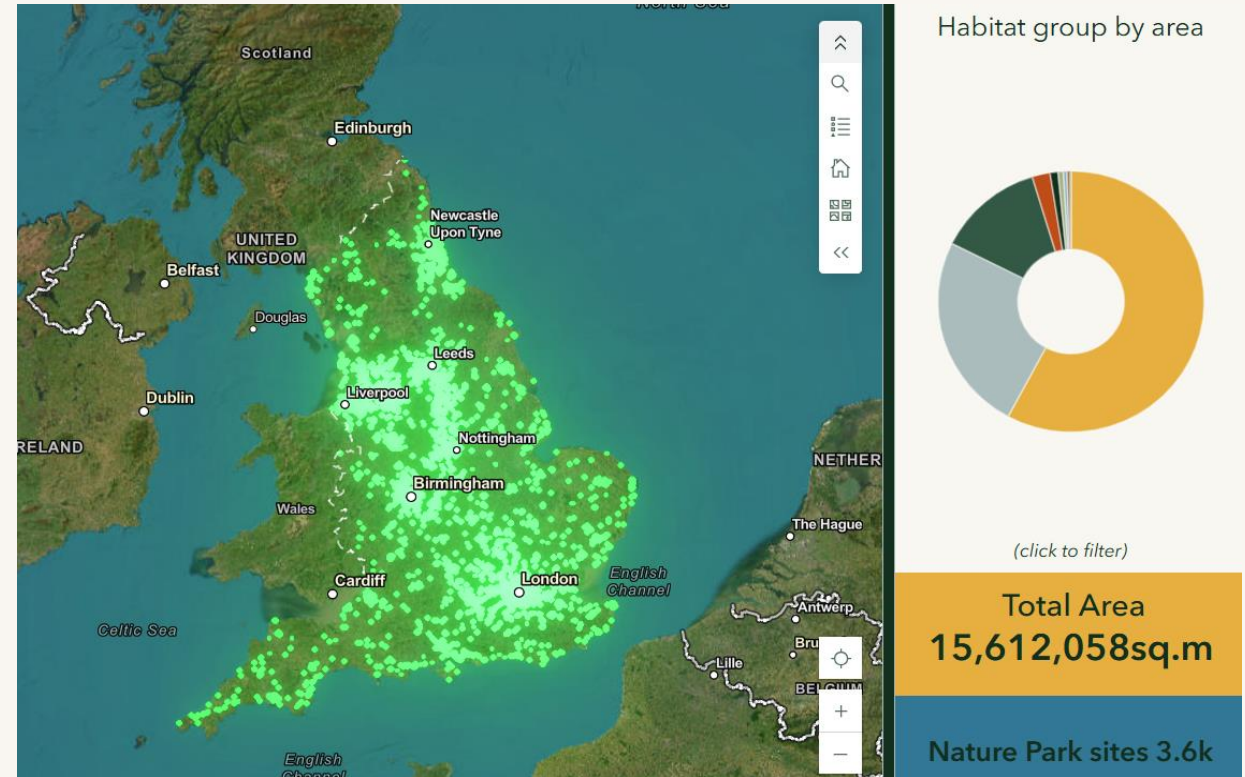
## Key Takeaways / Discussion / Q&A



# The National Education Nature Park

The Nature Park is a growing network of nurseries, schools and colleges across England working together for nature.

Over 7500 settings have joined the Nature Park so far.





# Nature Park Process

- Educator led (with regional support)
- Pupil-centred programme
- Fully resourced, curriculum-aligned
- Flexible

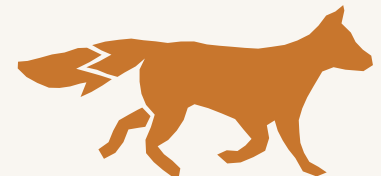
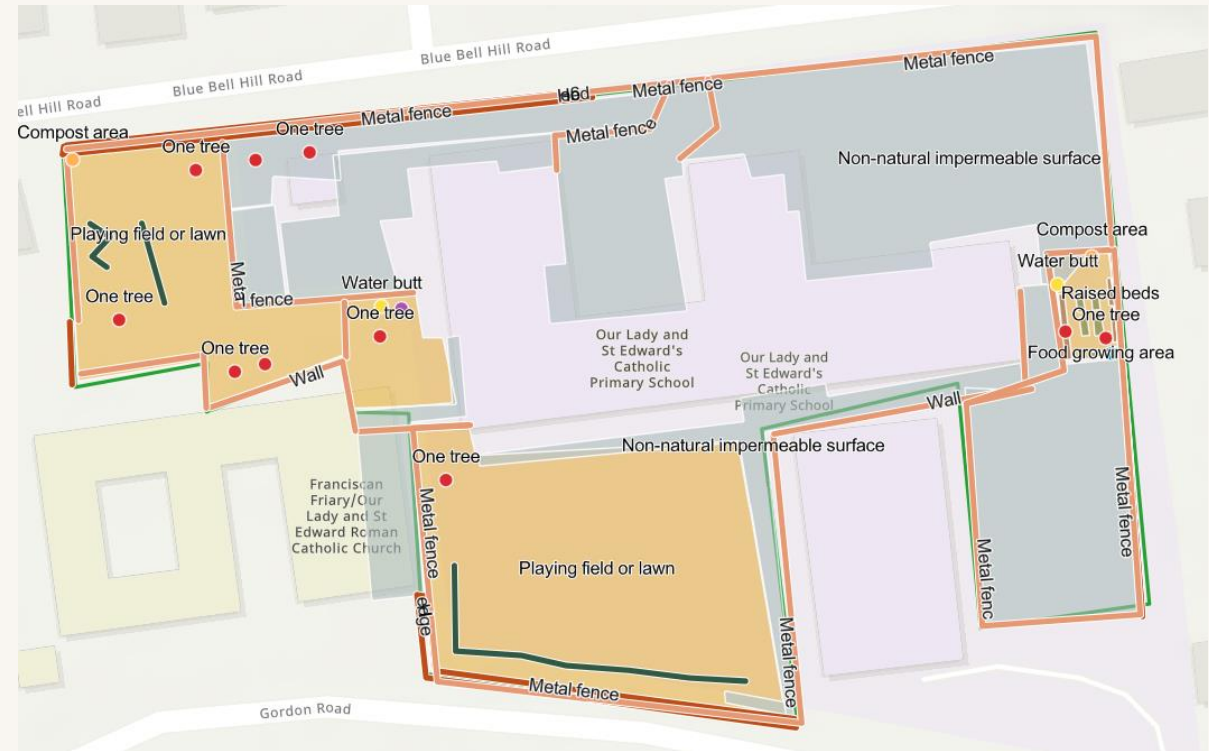
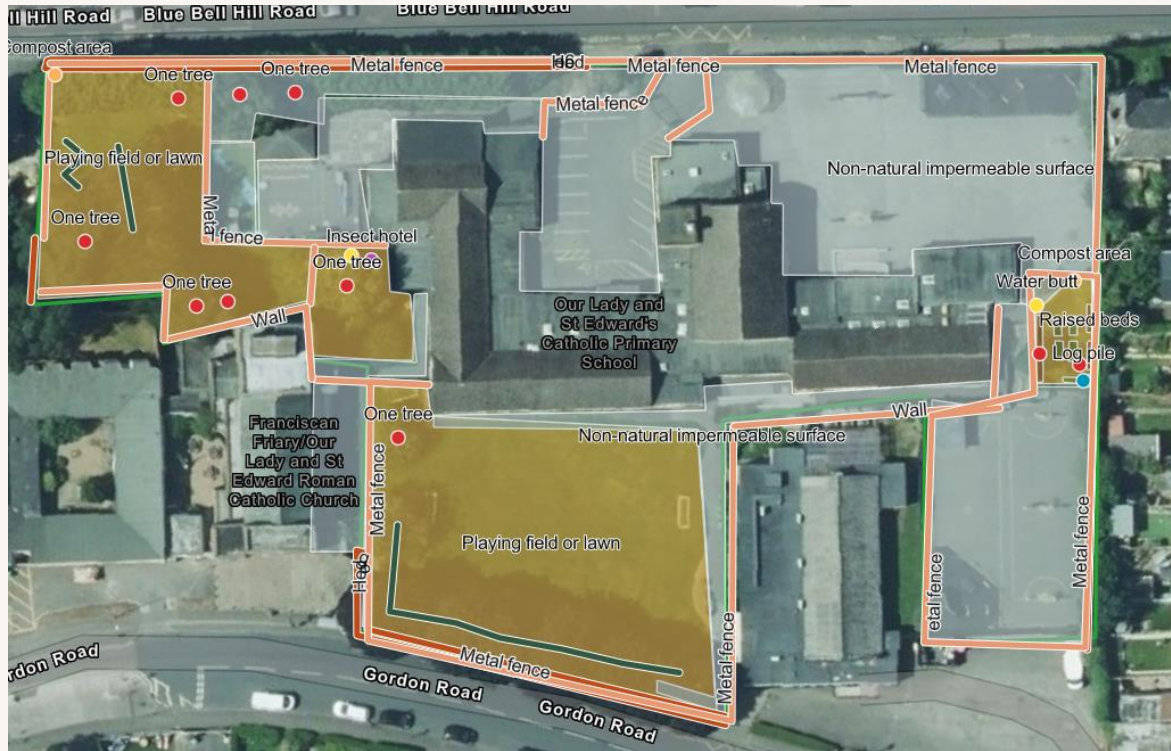


# Nature Park Benefits

- Contribute to **biodiversity gain** and collect real scientific data
- **Enhance your curriculum** with free, high-quality teaching and learning resources.
- Development of **digital and green skills** which connect with real-world careers
- **Improved wellbeing** for young people
- **Tackles inequalities** around greenspace access
- Supports DfE's **Climate Action Plans**



# Habitat Mapping: “Getting to know your space”



## Mapping tree habitats

Mapping tree habitats is part of the Mapping your site activities, enabling you to explore and map the habitats your site currently offers for nature. Understanding your starting point is really important and will allow you to measure any nature gains you achieve when you start making enhancements to your site. Mapping tree habitats is one of seven habitat mapping sessions in this unit of learning.

Meet a tree and the tree survey

Before mapping any tree habitats, these introductory activities have been designed to support learners in identifying the key features of trees, allowing them to answer the questions in the Trees flowchart accurately. The learners' flowchart answers are then added to your Nature Park map by an educator, using the Habitat Mapper app.

The tree survey supports learners to identify what type of woodland they have on your site using the Trees flowchart. In the Habitat Mapper app groups of five or more trees are mapped as woodland. The type of woodland – broadleaf, evergreen or mixed, is determined by the proportions of the type of tree.

Meet a tree and the tree survey can also be used as standalone activities, promoting a positive connection with nature.

### Teaching time

60 Minutes

### Learning outcomes

- To know how to identify fruit and nut trees.
- To know how to identify the life stage of a tree.
- To identify the difference between evergreen and broadleaf trees.
- To record and interpret data about the number of evergreen and broad-leaf trees within a sample of 10 trees.
- To use their data to classify their woodland.
- To understand their role and contribution to mapping the habitats on their site as part of the Education Nature Park.

### Step by step

1. Ask learners to work in small groups (three works well) to choose a tree.
2. Once chosen, give learners no more than two minutes to either observe and sketch the tree, the leaves or make a bark rubbing on their worksheet. Remind them that it doesn't need to be perfect!
3. Use the worksheet to guide the learners in estimating the life stage of the tree. Look at the height of the tree, the thickness of the trunk and the texture of the bark.
4. Ask learners to draw the shape of the leaves and discuss whether the tree is evergreen or broadleaved using the worksheet.
5. Consider what fruits, nuts, or seeds the tree produces. Discuss whether humans or other animals can eat these. Do not eat any fruits or nuts unless you can positively identify them as edible.

## Tree survey

Follow steps 1-4 to find out what type of woodland you have.

- 1 Pick 10 trees in the area you're studying. If there are fewer than 10 trees, just choose as many as you can find.
- 2 Examine each tree and tally in the correct box for each that is evergreen and each that is broadleaf.

### Evergreen trees

My leaves are tiny scales that overlap on my twigs, or needles




### Broadleaved trees

My leaves are other shapes and more than 1cm wide




- 3 Add up your tally below.

Evergreen trees

Broadleaved trees

- 4 Compare your totals with the statements below to decide which type of woodland your study area is.

For 10 trees

For fewer than 10 trees

There are 8 or more broadleaved trees

**Broadleaved woodland**

All trees are broadleaved

There are 8 or more evergreen trees

**Evergreen woodland**

All trees are evergreen

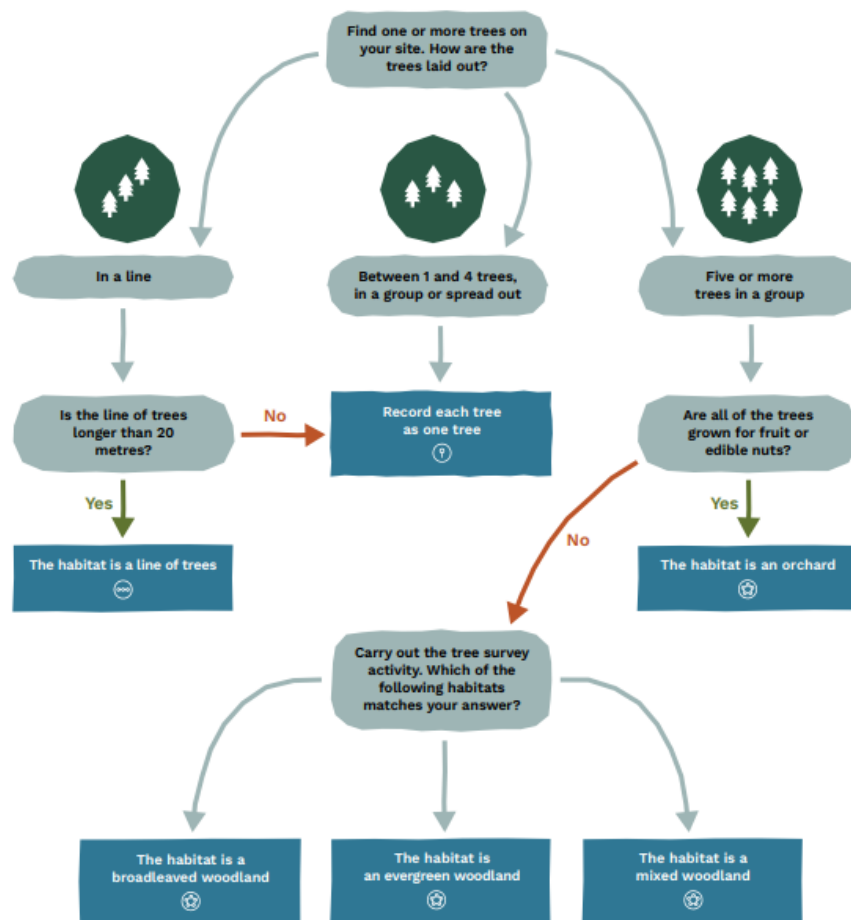
There are between 3 and 7 broadleaved trees

**Mixed woodland**

There are both broadleaved and evergreen trees

## Trees

Answer the questions and follow the arrows to find out what habitats you have. When you reach a rectangular box, work with your teacher to add this habitat to your map.



Ancient grazing woodland

Very large sites may have a habitat where large trees are spaced out and cows or sheep eat the grass between the trees. If you're lucky enough to have this habitat, record it as Ancient grazing woodland.



- Legend
- Basemap Gallery
- Layers
- Info
- Edit
- Collapse

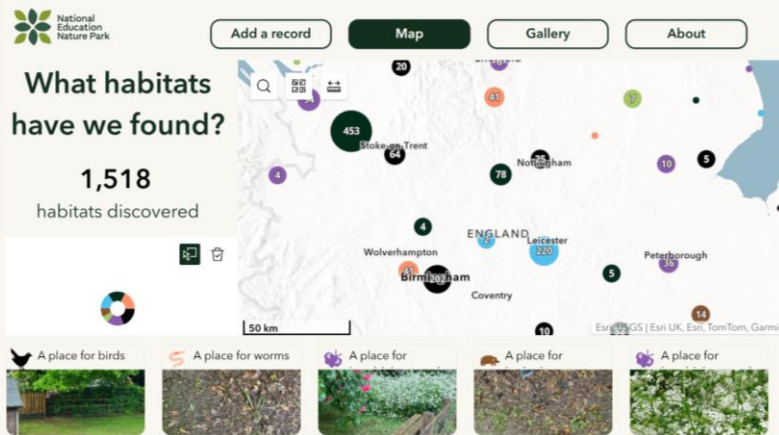
Maxar, Microsoft, Esri, Community Maps Contributors, Esri UK, Esri, TomTom, Garmin, GeoTechnologies, Inc, METI/NASA, USGS

Powered by Esri

# Session outline



Our vision is a nature park where wildlife thrives. Our nature park will be full of incredible wildflowers, insects, birds and other wonderful wildlife. Our goal is to not replace the nature we already have but add lots of beneficial things to it. The main reason why we want to do this is so we can create a nature paradise for many years to come.



## What is the National Education Nature Park?

### Getting to know your space

- Sound Mapping
- Vision Statement
- Colour Collecting



### Identifying Opportunities

- Points of View
- Habitat Heroes

## Key Takeaways / Discussion / Q&A

# Discussion/Q&A

- How do you see it working in your school?
- How do you see it benefitting your learners?
- Potential challenges
- **Time for Q&A**





National Education Nature Park

Led by



With



Working with



Commissioned by



[educationnaturepark.org.uk](http://educationnaturepark.org.uk)

Partners



[eastmidlandsnaturepark@ltl.org.uk](mailto:eastmidlandsnaturepark@ltl.org.uk)