

What is a Local Plan ?

Statutory Plan that sets out the long term, vision, framework, development strategy and strategic priorities for the Local Authority

Vision, aims and objectives- *how the place should be in the future*

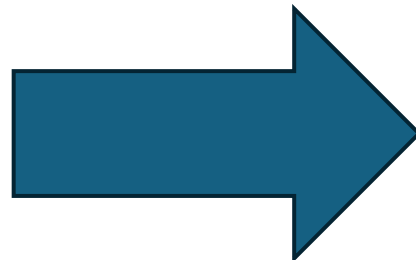
Planning policies- *policies used to determine local planning applications*

Policy map- *how policies translate spatially, showing the location and extent of different designations or places*

Site allocations- requirements for specific development sites.

Housing sites / Employment Sites & Economic Prosperity / Regeneration / Protected Areas / Town Centres / Retail . . .etc

Shapes our Built
&Wider Environment



Impact on Human Health &
Physical Activity

Simplified overview

Influence
over whole
places for
many years

Influence
over
detailed
designs

Government:
National
Planning Policy
Framework
(NPPF)
Planning Practice
Guidance (PPG)

**Combined
Authorities /
Greater London
Authority:**
Regional Plans
(only in some
areas)

Councils:
Local Plan and
policies,
supplementary
planning
guidance

**Town / Parish
Councils:**
Neighbourhood
Plans (only in
some areas)

**Masterplans for
larger
developments**

**Planning
applications,
designs for
individual sites,
buildings and
spaces**



Simplified overview

Health appears in, and can be woven through, all of these stages.

Influencing the **Local Plan** is one effective way to effect change.

Influence
over whole
places for
many years

Influence
over
detailed
designs

Government:
National
Planning Policy
Framework
(NPPF)
Planning Practice
Guidance (PPG)

**Combined
Authorities /
Greater London
Authority:**
Regional Plans
(only in some
areas)

Councils:
Local Plan and
policies,
supplementary
planning
guidance

**Town / Parish
Councils:**
Neighbourhood
Plans (only in
some areas)

**Masterplans for
larger
developments**

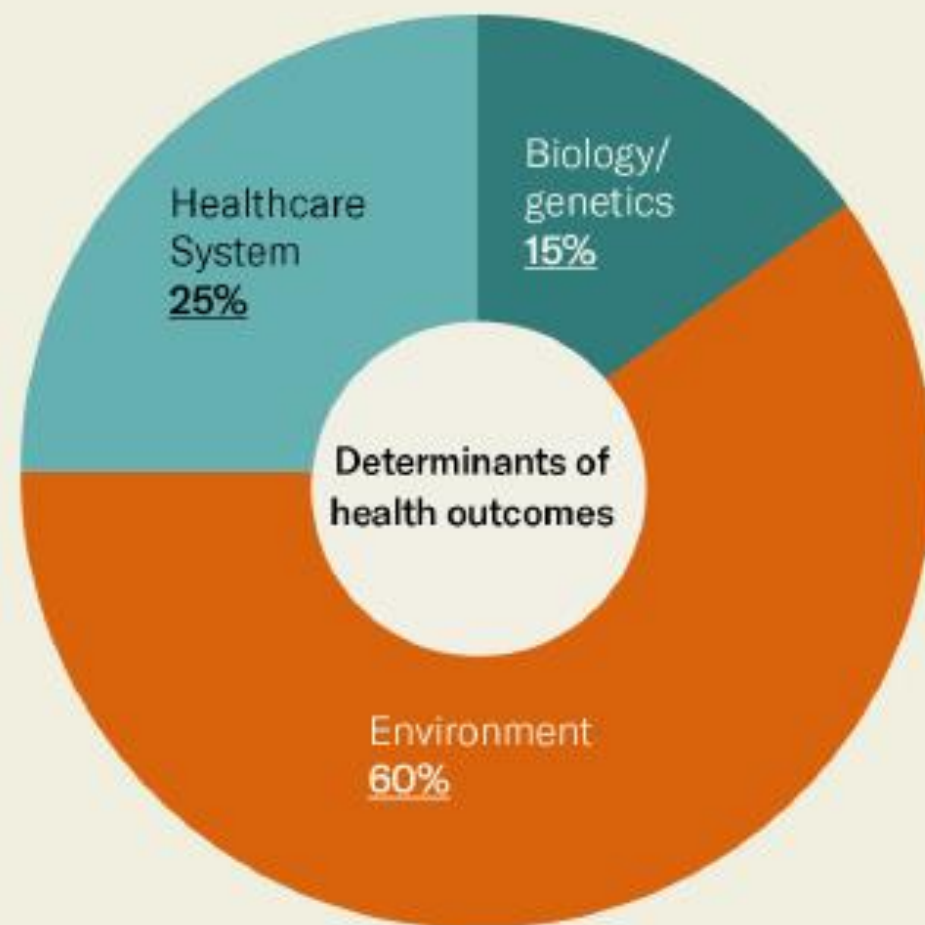
**Planning
applications,
designs for
individual sites,
buildings and
spaces**



Planning and health

“If you look back over the last 150 years, more has been done for public health by proper planning than almost any other intervention (except, perhaps, vaccination).”

*Prof. Sir Chris Whitty
TCPA's Annual Conference 2022*



Our environment, including our social and economic conditions, determines 60% of health outcomes²

Role of planning

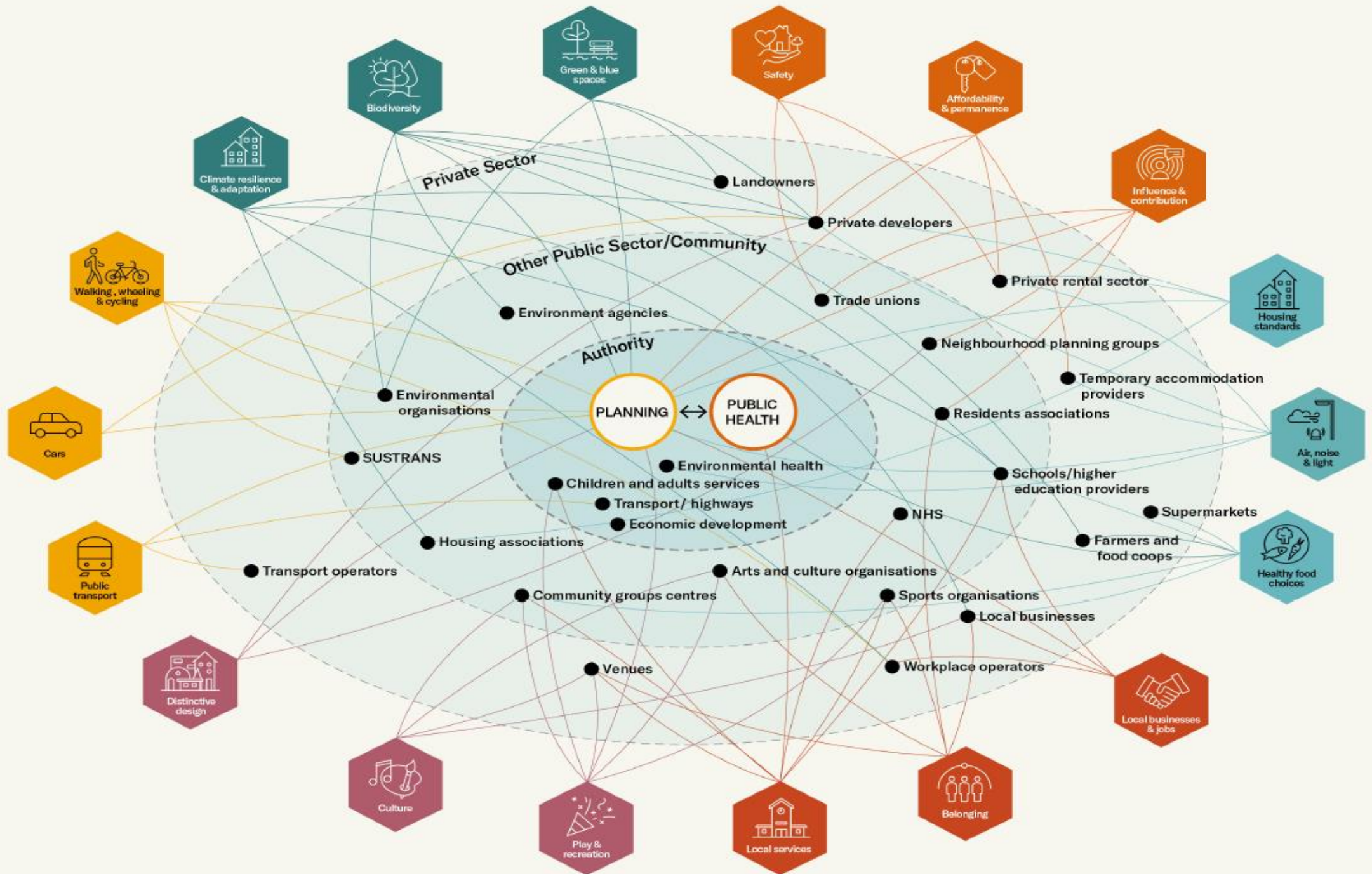


“Planners and other built environment professionals play a pivotal role in making decisions about the environment that will last generations.

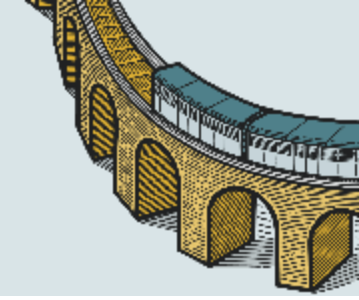
Planning for health does not happen by default. Having a strong, health-oriented regulatory framework is necessary to ensure due process and achieve outcomes”.

Neighbourhoods





Health in local plans



Context

- A definition of health
- National strategy, standards, guidance
- Local strategy
- Local health evidence/data
- Health Impact Assessment

Policy

- Strategic policy/objective
- Healthy developments
- Neighbourhood design
- Healthy homes
- Healthier food environment
- Natural and sustainable environments
- Healthy transport and movement

Implementation

- Funding of health requirements
- Viability appraisal
- Health management plans
- Monitoring obligations
- Community engagement and ownership

Policies: Targeting key determinants of health

Establish policies that reflect strategic health priorities and inequalities through targeting key determinants of health

Themes	Principles
1. Neighbourhood design	1. Enhance neighbourhood walkability
	2. Build complete and compact neighbourhoods
	3. Enhance connectivity with safe and efficient infrastructure
2. Healthy homes	4. Improve quality of housing
	5. Increase provision of affordable and diverse housing
	6. Increase provision of affordable housing for groups with specific needs
3. Healthier food environments	7. Healthy, affordable food for the general population
	8. Enhance community food infrastructure
4. Natural and sustainable environments	9. Reduce exposure to environmental hazards
	10. Access to and engagement with the natural environment
	11. Adaptation to climate change
5. Healthy movement and transport	12. Provision of active travel infrastructure
	13. Provision of public transport
	14. Prioritise active travel and road safety
	15. Enable mobility for all ages and activities

OPPORTUNITIES FOR PUBLIC HEALTH TO INFLUENCE LOCAL PLAN PROCESS

[1-3]

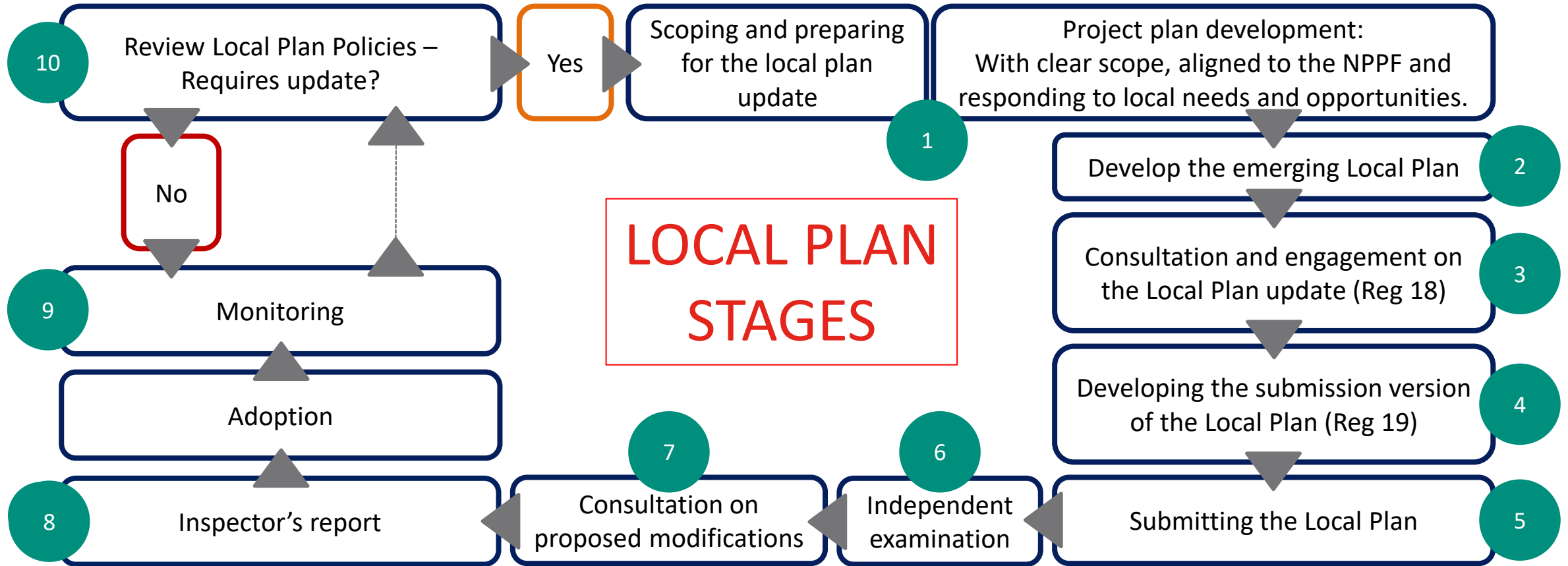
Provide evidence and commentary on local population health (locality profiles, Health & Wellbeing Plans and priorities, inequalities data, HNAs etc.). Promote embedding of health & wellbeing, and inclusion of specific health & wellbeing policies, including Health Impact Assessment requirement policy. Provide evidence base for draft policies and comment on draft policies.

[4]

Complete HIA of submission version of Local Plan.

[5]

Update HIA if plan significantly amended in any area deemed significant before submission.



[CREDIT] Planning Advisory Service: Local Plan Route Mapper

[6-7]

Be prepared to contribute to Examination Stage as local plan scrutinised if required.

[8]

Check for any learning.

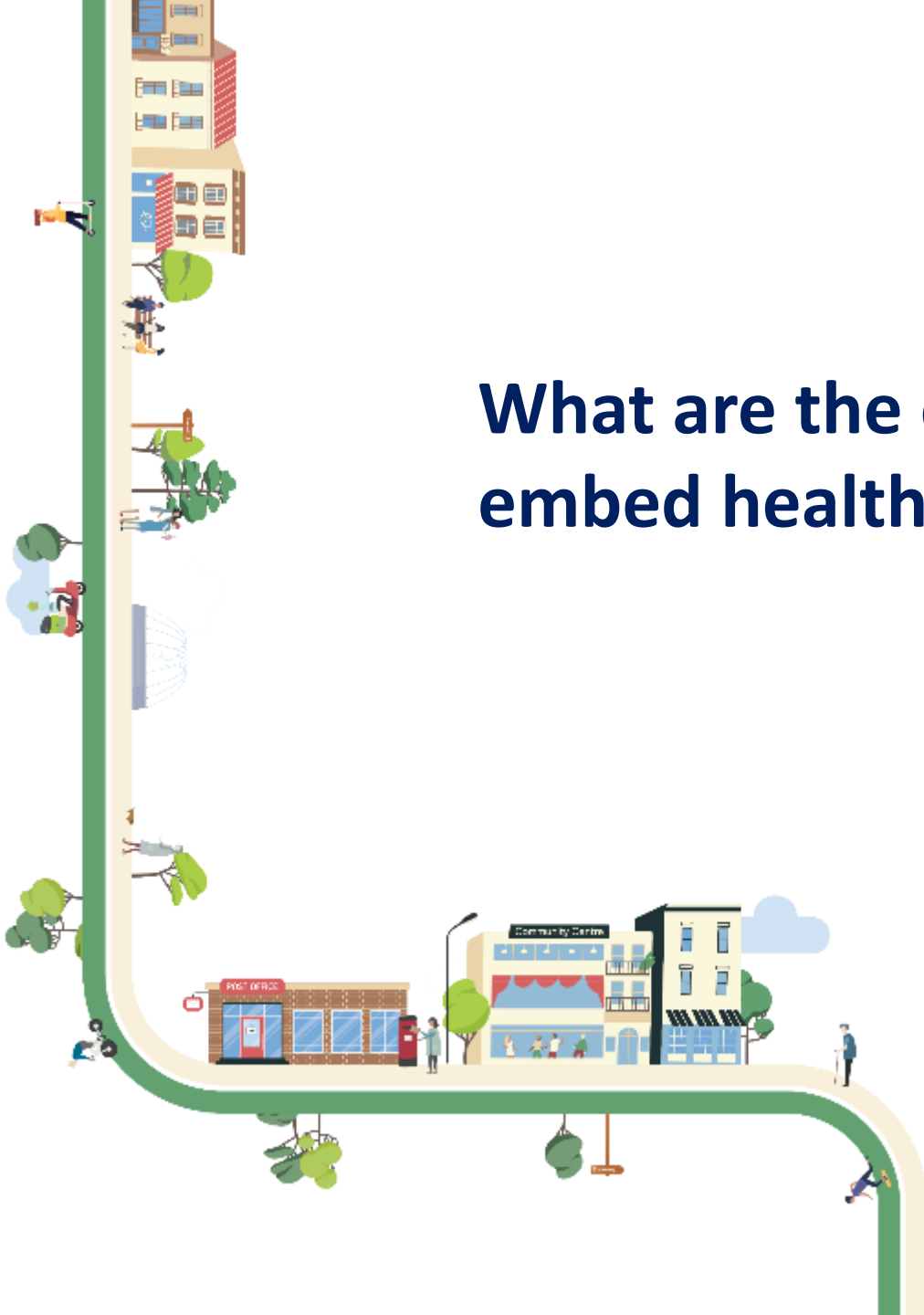
[9]

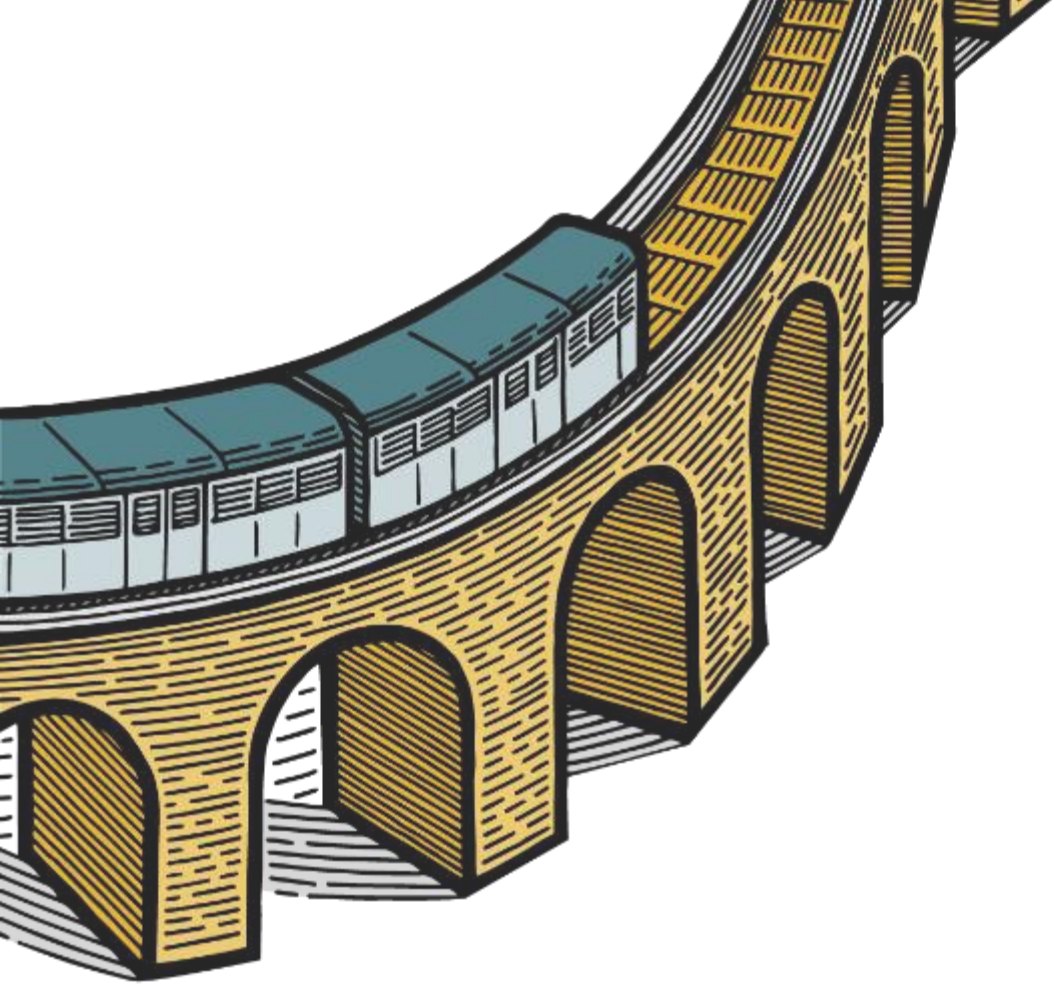
Feed into Monitoring as required in adopted policy. Carry out HIA and consultee function on planning applications as required by policy and as agreed with/within the Local Authority.

[10]

In widest context, seek opportunities to embed health into all plans and policies – reviewing most up to date evidence. Feed into reviews of if Adopted Plan remains fit for purpose.

What are the opportunities and challenges to embed health in planning policy locally?





Find out more

Website: tcpa.org.uk

Twitter/X: @theTCPA

LinkedIn: uk.linkedin.com/company/tcpa

Email: gemma.hyde@tcpa.org.uk



Sign up to our newsletter to receive regular updates about our latest news, research, events and much more!